

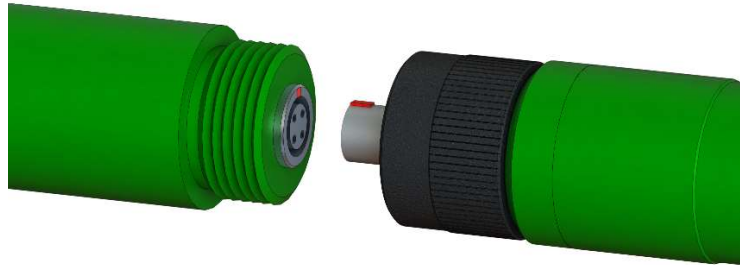
Installation Instructions

DataCan's Threaded Locking Battery Packs

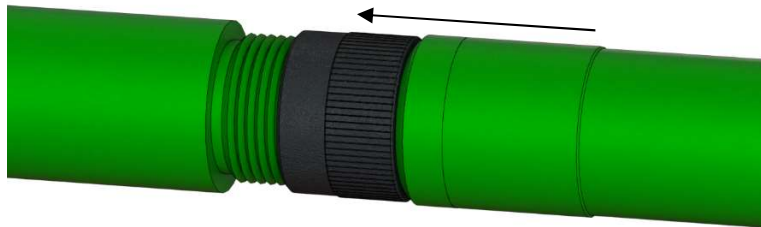


Installation

- Align the male key or lug on the battery pack to the female key on the electronics assembly. A small red dot on the connectors indicates the position of the respective keys.



- Without turning or twisting, push the battery pack towards the memory module.



- Thread the battery pack into the electronics housing. Tighten to finger tight or just past finger tight. *Do not exceed 10ft*lbs as this may damage the aluminum collar or retaining ring on the battery pack.*



Note: All threaded locking battery packs made after August 2019 have a self-locking patch on the internal thread of the collar to help prevent the battery packs from backing off downhole.

- The LED located at the top of the battery pack should blink 16 times indicating that the gauge is now running. This action powers the gauge and initiates the gauge program.